

# ECO PORTABLE SUBMERSIBLE DRAINAGE PUMP

## “2PED” Series



[www.hetpump.co.in](http://www.hetpump.co.in)



[info@hetpump.co.in](mailto:info@hetpump.co.in)



+91 - 91738 00343

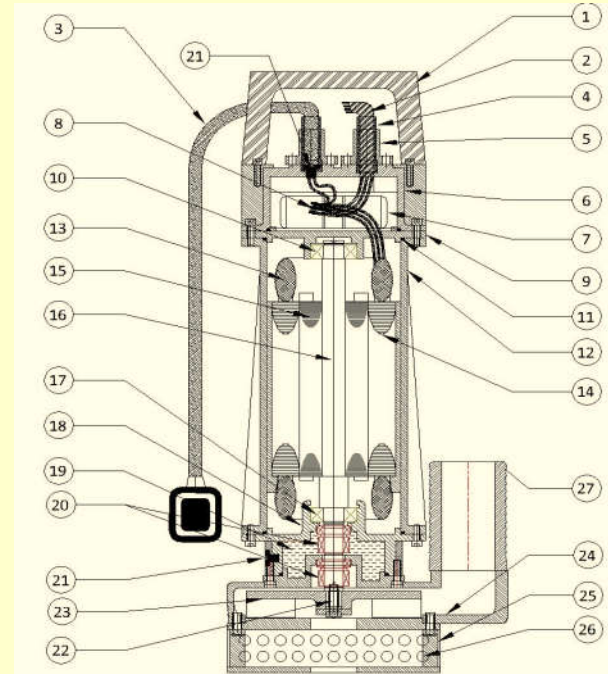
+91 - 95108 02043



The ECO PORTABLE SUBMERSIBLE DRAINAGE PUMP "2PED" Series is designed in single Stage Submersible Centrifugal Vertical ( Mono Block Type ) portable construction ,This series pumps are economical cost effective Light weight , easy to handle and easy to use. It comes with both option single phase and three phase connection , This pump is suitable for dewatering , small particale sludge and drain applicaiton with up to 20 mm soild handling size.

## Why "HET" make "ECODRAIN"

- >Easy to handle with robust design ( Light Weight)
- >Easy to maintain and also repairable multiple time ( Not like other imported pump in the market use and throw)
- >Double Mechanical seal set which gives longer life
- >Solid handling size up to 20 mm ( Vortex ,Semi Open both design available -as per application )
- > Design with Stainless steel Impeller to maintain long lasting
- >Float switch provided in single phase pump models ( optional )
- >Compact size gives liberty to use in small space
- >Plug and play product so, no additional accessories required to start the pump (in three phase pump - panel /starter require, single phase - we provide on/off starter with pump OR **Inbuilt capacitor along with pumpset.**)
- >Pump provided with threaded delivery end for suitable hose connection



NO.	DESCRIPTION	NO.	DESCRIPTION
1	HANDLE	15	ROTOR DIECAST
2	CABLE	16	ROTOR SHAFT
3	FLOAT SWITCH For 1 - Phase	17	BOTTOM BEARING
4	CABLE PROTECTOR	18	BOTTOM BEARING HOUSING
5	CABLE GLAND	19	OIL
6	TOP COVER	20	MECHANICAL SEAL
7	CAPACITOR For 1 - Phase	21	DRAIN PLUG
8	CABLE JOINT KIT	22	IMPELLER KEY
9	TOP BEARING HOUSING	23	IMPELLER
10	TOP BEARING	24	VOLUTE
11	O' RINGS	25	STAND
12	MOTOR BODY	26	STRAINNER
13	WINDING	27	DELIVERY HOSE
14	STATOR STAMPING		

### MATERIALS OF CONSTRUCTION

Top Cover, Base, Brg. Hsg.	Cast Iron / Stainless Steel / Mild steel
Motor Body	Mild Steel / Stainless Steel / Cast Iron
Impeller	Cast Iron / Stainless Steel / CF8M
Shaft	S.S.- 400 Series
Hard Ware	Stainless Steel
Mech. Seal Motor Side & Pump Side	SIC/SIC OR TC/TC OR Any As per Requirement.
Rubber Part	Nitrile Elastomers
Spring	Stainless Steel
Surface Treatment	Primer with Epoxy or Air Dry Enamel

### SPECIAL FEATURES

**1. SPECIAL MOC PROVIDED AS PER CLIENT REQUIREMENT.**

### APPLICATION

- \* Construcion Sites
- \* Infra developments
- \* Various Industries
- \* Power Station /Steel ind.
- \* Tunnels/Tank Cleaning
- \* Flooded Cellar
- \* Rain Water/Strom water
- \* Basement Dewatering

### TECH. SPECIFICATION

1. MOTOR - 0.5 KW TO 2.2 KW
2. SPEED - 2900 RPM
3. HEAD - MAX. - 18 MTR.
4. DISCHARGE - MAX. 850 LPM
5. SUPPLY-1 $\phi$  / 3 $\phi$  , 50HZ, AC
6. SOLID SIZE- UP TO 20 MM
7. IMPELLER - SEMI/CLOSE TYPE
8. WINDING-"F"/"H"

### ACCESSORIES (OPTIONAL)

- \* Control Panel , Float switch
  - \* Hose pipe
  - \* Additional accessories also available
- OPTIONAL DESIGN FEATURES**
- \* Impeller Trim
  - \* Additional Cable length
  - \* Change in Material of construction
  - \* Optional Hydraulic Design

An ISO 9001 : 2015 Company

## HET ENGINEERING & PUMPS IND. PVT. LTD.

Office & WORKS 1 :- 53, Sahitya Industrial Hub, Nr. Shivbhumi 4, Kujad Gatrad road, Bakrol-Bujrang, Ta. Daskroi, Dist. Ahmedabad - 38 24 30.

Works 2 :- Plot no. 23, Survey No. 33, Dhandha Industrial Area, Village - Himatnagar - 383 001

E-mail: [info@hetpump.co.in](mailto:info@hetpump.co.in) , Website : [www.hetpump.co.in](http://www.hetpump.co.in)

DEALER/DISTRIBUTOR

